



# Blackfriars Bulletin

Volume 10 Issue 01

Blackfriars Newcastle Reception:  
01782 987150



## Safeguarding Contact Information

### Staffordshire

First Response:  
0800 1313 126  
Outside office hours:  
0845 6042886

### Stoke-on-Trent

Advice and Referral Team:  
01782 235100  
Outside office hours:  
01782 234234

### Cheshire East

Referral Team:  
0300 123 5012 Option 2  
Outside office hours:  
0300 123 5022

### Shropshire

Referral Team:  
01743 254 259  
Initial Contact Team:  
0345 678 9021  
Outside office hours:  
0345 678 9040

## Adult Safeguarding Referral Numbers:

### Staffordshire:

First Response -  
0845 604 2719

### Stoke on Trent:

Adult Social Care -  
0800 561 0015

[BlackfriarsAcademy.org.uk](http://BlackfriarsAcademy.org.uk)

## Welcome Back

What a great start to the new academic year with 117 students in school. We have had 18 new students join the Blackfriars community.

Benjamin, Charlie, Harry, Lachlan, Sebastian and Thomas-James are in Dudson. Mia has joined the Clarice crew and Geezer, Ali, Jacob and Kerim are all in Moorcroft. Alfred, Cadison, Iziah, Jacob, Jonathan, Leonie-Jade, Rohan and Theodore make their entrance into Middleport and Churchill have cheered the arrival of Daniyal, Ilyas and Kai. We warmly welcome them all to Blackfriars and hope that they will be very happy here.



Our anchor this term is 'Belonging' – a theme which underpins the work that we have been doing in classrooms. Our first assembly, led by Mrs Rawlinson, kicked off our PSHE calendar by looking at 'All about me' Our students were challenged to think about themselves and then which groups they 'belonged' in – Form group, Pathway, House Group etc.



## A reminder on our Pathways



### **Immersive:** **Dudson, Clarice & Aynsley**

The Immersive Pathway is for those pupils who need a range of multi-sensory experiences to make sense of their world and to stimulate engagement and interaction. Through structured, repetitive immersive environments and topics that stimulate the senses, the pupils are motivated to engage, experience, anticipate, participate and develop their interaction and communication skills.



### **Exploratory:** **Moorcroft, Bridgewater & Middleport**

The Exploratory Pathway sits centrally between the immersive and questioning pathways. The curriculum on offer to students consists of a wide range of subjects and therapeutic based sessions tailored to suit the needs of individual students and the classes they sit within. The Exploratory curriculum offer students opportunities to develop early literacy and numeracy skills, social and communication development and building confidence when accessing the wider community. Where appropriate we also offer students access to range of external accreditations.



### **Questioning:** **Churchill, Royal Doulton, Portmeirion and Gladstone**

Our questioning pathway leads our students on a journey of self-discovery. Based on foundations of inclusiveness and self-awareness, students grow in confidence through developing an enquiring and questioning mind, as well as an understanding of self. Through our personalised tailored curriculum, students study a wide range of subjects leading to internal and external qualifications. Alongside this, they develop resilience, coping strategies, and the courage to equip them for life beyond school.



## **Key dates for your calander**

As the new year gets underway, I wanted to explain to parents and carers how we organise our formal consultations. We have a duty to report to parents and carers three times a year. As with everything else at Blackfriars, this is quite complicated because our classes are not organised in year groups and the way in which we report to parents and carers varies dependent upon the ability of your child.

I hope that the following table makes it clear how and when you will be reported to and sets out the other opportunities that you will have to come into school. Each event will be preceded by an invite but we thought you would like advance notice.

(Please see table on the next page)



### Grandparents' Lunch:

Immersive Pathway - Dudson, Clarice and Aynsley		15th November 2023
Questioning Pathway - Churchill, Royal Doulton, Portmeirion and Gladstone		6th March 2024
Exploratory Pathway - Moorcroft, Bridgewater, and Middleport		16th May 2024



### Parent Workshops:

All parents & Carers welcome

You & your teenager - Digital	18th October 2023
You & your teenager - Body	15th January 2024
You & your teenager - Mind & spirit	27th February 2024



### Coffee morning:

Year 7s and any other new starters	19th September 2023
---------------------------------------	---------------------



### Preparation for Adulthood (PfA) meetings Year groups: 8, 10 & 11

Face to face meetings	16th October 2023
Online meetings	23rd October 2023



### Annual review and PfA meeting combined (individual dates to be confirmed)

Year 13s	September & October
Year 7s	October & November
Year 9s	November & December

### Annual review (individual dates to be confirmed)

Year 8s	December & January
Year 10s	March & April
Year 11s	April & May



### Spring term reports

Years 7, 8, 11 & 13 -

February 2024

### End of year reports

All year groups -

July 2024



### Parents and carers Makey-Doey session

Preparing for Christmas Fayre -

24th November 2023

### Christmas Fayre

8th December 2023

## Preparation for Adulthood



Part of the training that we did on Tuesday was about how we, as a staff team, can better prepare our students for adulthood (PfA). This is obviously very different dependent upon the needs of the child but we are going to be explicitly teaching the students about the importance of personal hygiene and personal presentation. It would be great if you could support us in this mission by trying to send in your child with clean uniform and brushed hair (tied back if long). Please do get in touch if you have any difficulties affording uniform, we can help with this.

If your child has personal care, please ensure that you provide a spare set of clothes, pads and wipes (this is particularly important because we cannot continue to buy wipes at the rate that we are doing)



### PE Kit

In keeping with our PfA initiative, we have decided that we would like students in the Exploratory and Questioning Pathways to come into school every day in their school uniforms and to change for PE in the lesson. Lots of our students have targets about dressing and undressing so this is a perfect opportunity for us to take 'Teachable Moments' to explicitly model eg, tying shoe laces. The House Colours for T-shirts are :-

**Jaguars with their new Head of House, Ms Buckton - Red**

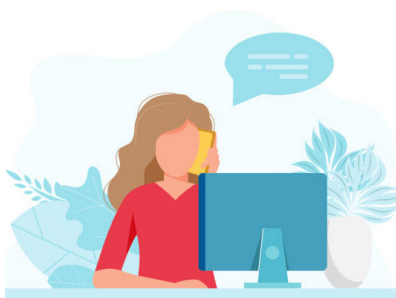
**Panthers with Mrs Emmens - Yellow**

**Tigers with Ms Mitchell - Green.**



## Don't forget

**Blackfriars Academy finishes early for students every Monday at 2:15 pm, this is for teacher training.**



### Contact us

Please do not hesitate to contact us at school if you have any concerns at all or wish to discuss anything, Pip, our wonderful Receptionist is available on 01782 987150

Naomi, our cook, has prepared a delicious menu which you can see on our school website and she also serves food at break time Monday – Thursday in her tuck-shop – prices are:-

Toast	30p
Crumpet	70p
Teacakes	70p
Toast and Jam	40p
Yogurt	75p
Fruit	50p
Flavoured water	85p
Apple juice	75p

On Fridays, our students in Bridgewater Class run a café. The Deliveroo service that they operate delivers food to students in their classes ready for break-time. All break time sales are **cash only please**.

Toast	20p
Crumpet	30p
Fruit Loaf	20p
Posh Coffee	50p
Juice	25p
Tea	30p
Hot Chocolate	50p